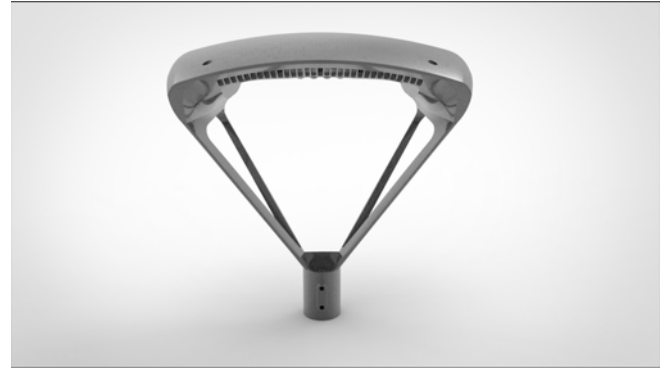




## LED Garden light

## KTSL6250



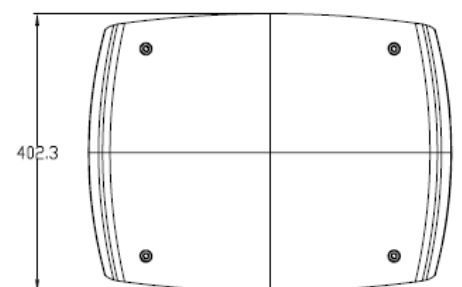
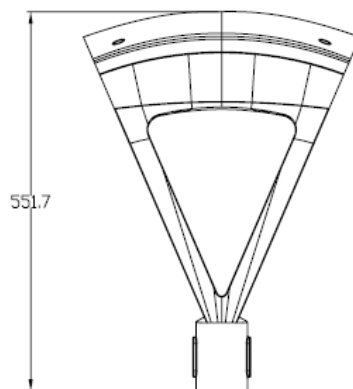
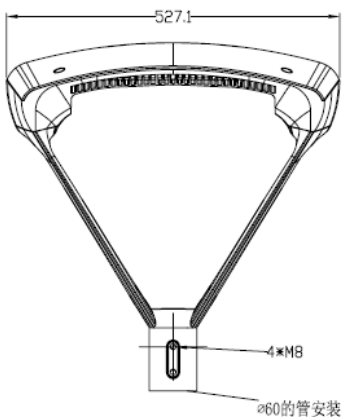
### 产品特点

1. Patented products.
2. LED chip brand: Samsung led chips for choice, 110lm/w for the whole lamp.
3. Using highly performance Meanwell power supply, easier for installation.
4. Using anti-corrosion spraying, durable, perfectly industrial design, it looks elegant appearance and fashionable modern style.
5. Unique structural mechanics, safety and firmly.
6. Beam angle: 90x120deg.
7. IP65.

### 应用场所

厂房，体育场馆，工业照明，建筑照明等场所，及普通道路照明。

### 产品尺寸 [KTSL6250-50/100/150/200/300](#)

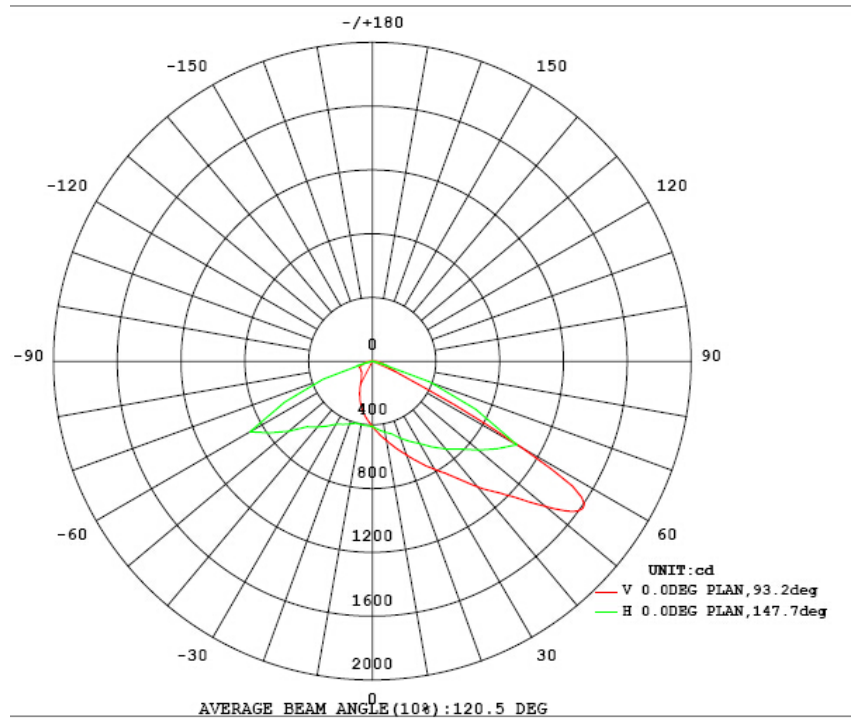




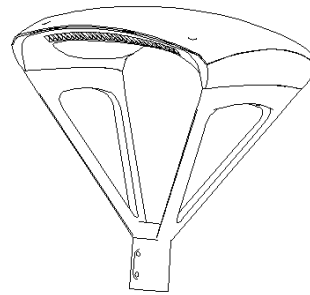
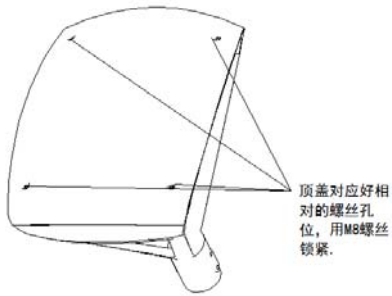
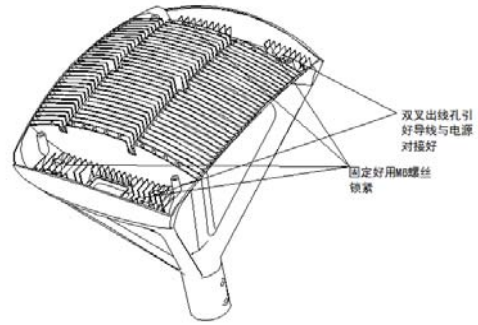
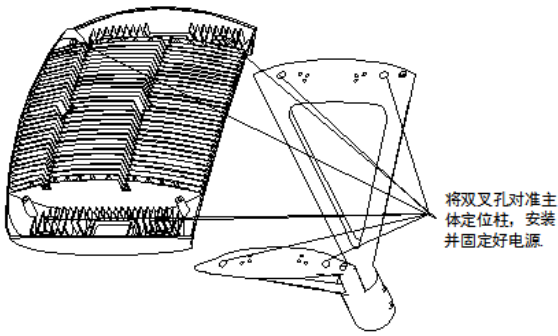
### 性能参数

型号	色温	显指	光通量	系统功率	产品尺寸/MM	净重
KTSL6250-300	(2800-7000K)	≥70	33696 LM	300±5W	615*595*490mm	13015g
KTSL6250-200	(2800-7000K)	≥70	22330 LM	200±5W	615*595*490mm	12980g
KTSL6250-150	(2800-7000K)	≥70	17044 LM	150±5W	615*595*490mm	12980g
KTSL6250-100	(2800-7000K)	≥70	11069 LM	100±5W	615*595*490mm	12860g
KTSL6250-50	(2800-7000K)	≥70	5534 LM	50±5W	615*595*490mm	12860g
2700-7000K 色温可选						
AC 90V~305V						
电源效率>95%						
储存温度: -40~50°C						

### 配光



## 安装说明



## 安装注意事项

- 安装前请先切断电源并且确保安装部位能承受本灯具的重量。
- 为了防止灯的脱落, 请务必确认安装无误。。
- 请不要在灯上覆盖任何材料。
- 为了安全, 请切实的接好地线。
- 本灯从购买日开始, 质保为五年。
- 但是对本产品的分解, 改装, 或者施工不当造成的故障不在本保证的范围内。